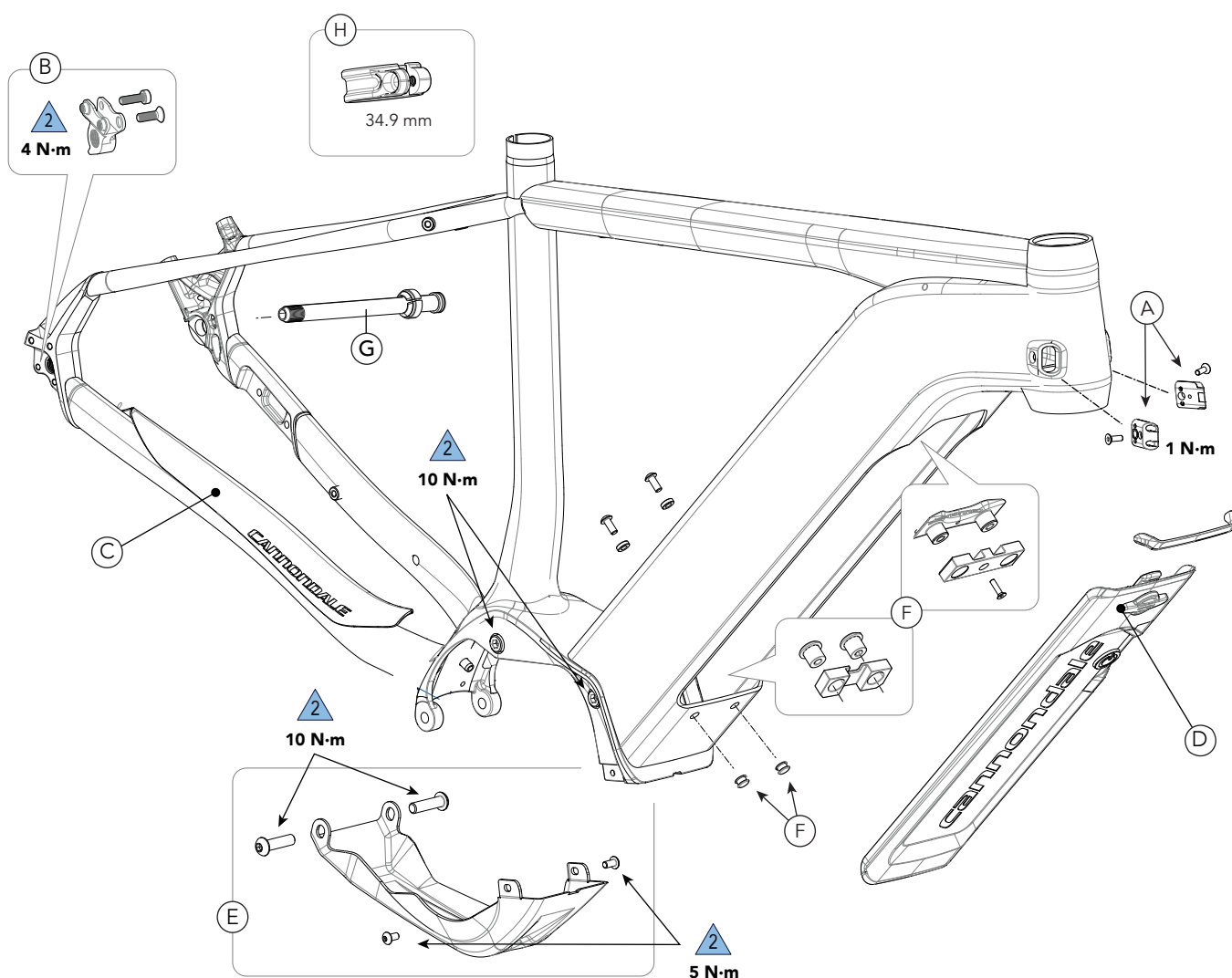


Cujo NEO (2019)

Item	Specification
Drive System	Shimano E8000 Drive Unit
Battery	Shimano BT E8020 504Wh
Drive-Assist Owners Manual	https://si.shimano.com
Head Tube	UPR: 1-1/8 in LWR: 1-1/2 in
Headset	Integrated, 1-1/8in - 1-1/2 in
Bottom Bracket: Type/ Width	Shimano E8000 Drive Unit
Front Derailleur	N/A
Seat Post: Dia./Binder	31.6 mm / 34.9 mm
▲ Min. Seat Post Insert	100 mm

▲ Tire Size x Max. Width	27.5 in x 2.8 in
▲ Max. Fork Length:	531 mm
Chain Guide	N/A
Brakes: Mount Type / Min/Max Rotor Dia.	RR: Post Mount / 160 mm / 203 mm
Axles: Type / Length	RR: Syntace TA / 148 x 12 mm
▲ Intended Use	ASTM CONDITION 2, General Purpose Riding
▲ Max. Weight Limit Total (Rider+All Equipment):	330 lbs / 150 kg



ID	Part Number	Description
A	KP456/	Modular Cable Guides Headtube
B	KP173/	Derailleur Hanger TA ST DS 026
C	CK3618U00OS	NEO Chain Stay Protector
D	K34089	NEO Battery Cover BLK

ID	Part Number	Description
E	K34099	Cujo NEO Skidplate w/ Hardware
F	K91019	NEO Battery Mounting Kit
G	K83078	Syntace X-12 Thru Axle 148 x 12 168 mm
H	KP388/	Seatbinder MTN Bolt 34.9