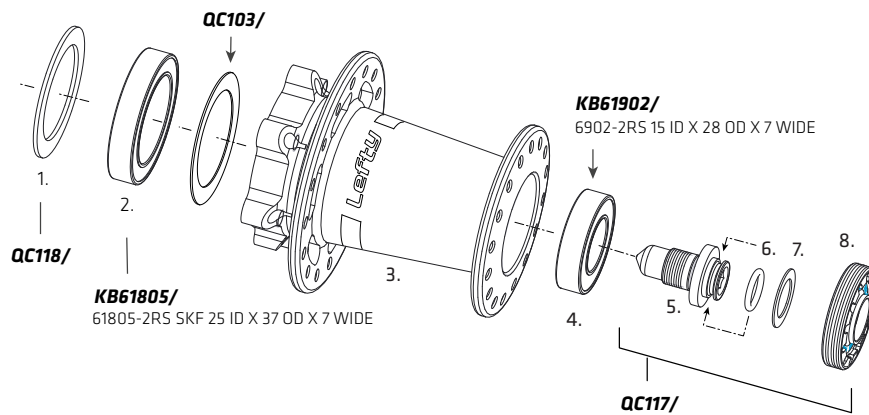
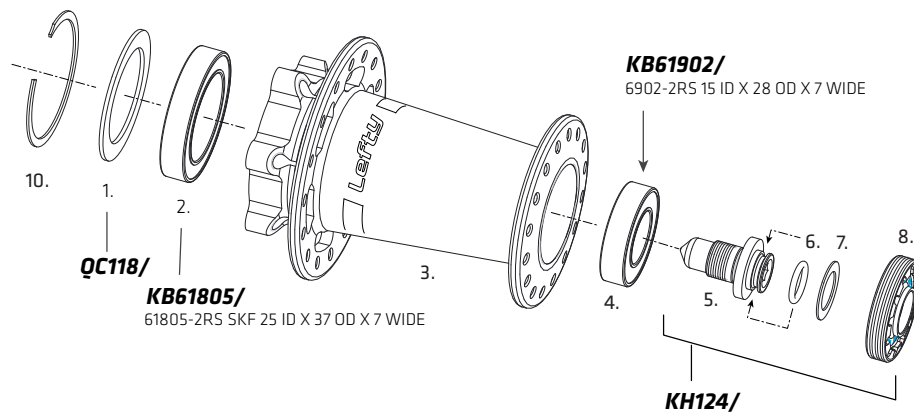


LEFTY WHEEL HUB & BRAKE ADAPTERS

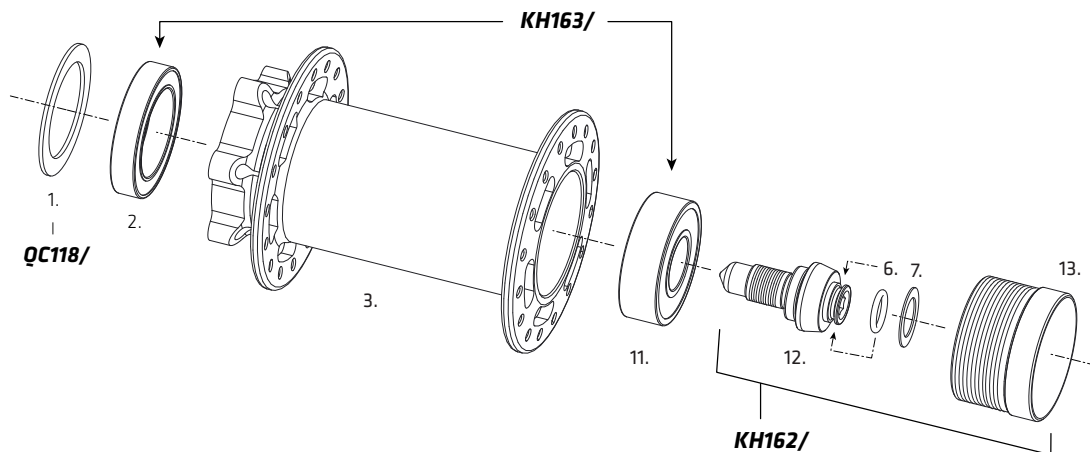
LEFTY 50



LEFTY 60



LEFTY 73



1. Hub Bearing Seal
2. Inner Hub Bearing
3. Hub Shell
4. Outer Hub Bearing
5. Axle Bolt Assy.
6. Lefty Hub Wheel Building Tool
Truing Axle
7. Axle Bolt
8. Hub Cap (Left-hand thread!)
9. Shimano Tool TL-FW30
10. Ring Clip (*SUPERMAX Hub Only)

Diagram illustrating the dimensions for wheel building. The drawing shows a cross-section of a wheel hub with a central disc flange and two side flanges. The dimensions are labeled as follows:

- A**: Total width of the hub.
- B**: Width of the disc flange.
- C**: Distance from the centerline of the wheel to the inner edge of the disc flange.
- D**: Distance from the centerline of the wheel to the inner edge of the side flange.

Spoke hole diameter = 2.5mm

DIMENSIONS FOR WHEEL BUILDING (mm)		LEFTY 50	LEFTY 60	LEFTY 73
A	Disc Flange Diameter	58mm	58.0mm	58mm
B	Non Disc Flange Diameter	45mm	45.0mm	58mm
C	Disc Flange To Center	18.8mm	25.8mm	36.5mm
D	Non Disc Flange To Center	31.6mm	34.6mm	36.5mm

Brake Adapter Usage

Use the table below to determine the correct LEFTY brake adapter to use with your model. Brake adapter kits (bold italic> are available through your Authorized Cannondale Dealer.

MODEL	SPINDLE OFFSET	WHEEL HUB			* MINIMUM BRAKE ROTOR DIA.
		"LEFTY 50" (a.k.a. "LEFTY SL")	"LEFTY 60" (a.k.a. "LEFTY SM")	"LEFTY 73"	
LEFTY 2.0	50 mm	--	KH215/	--	160 mm
	55 mm	KH112/	KH111/	--	
SUPERMAX	50 mm	KH131/	KH130/	--	180 mm
	55 mm	KH112/	KH111/	--	
OLAF	60 mm	--	--	KH112/	

* Minimum Brake Rotor Diameter is the smallest size brake rotor that can be used for a given model/wheel hub combination. For example, a LEFTY 2.0 adapter support a minimum 160mm rotor and a 140mm can not be used. A 180mm may be used with a compatible 180mm rotor adapter mounted to the LEFTY adapter.